

FSHP

60th Annual Meeting

Sparkle Shine

Celebrate!



7-9 August, 2026 | Renaissance Orlando at SeaWorld

FRIDAY

TIME	SESSION/EVENT	ROOM
7:00am-5:30pm	Registration Desk Open	Peninsula Registration Desk
7:00-8:00am	Attendee Continental Breakfast	Atrium CD
7:00-8:00am	Breakfast Symposiums (see agenda on the app or website for details)	
7:45-9:00am	General Session/Awards Ceremony	Peninsula Ballroom
9:00-11:00am 2 hours GCE/Tech	Controlled Substances	Peninsula Ballroom
11:20am-12:20pm 1 hour GCE/Tech	Legal & Regulatory Update	Peninsula Ballroom
11:30am-2:30pm	Exhibits (Attendee Lunch 12:20-1:20pm)	Oceans Ballroom
12:30-1:30pm	Lunch Symposiums (see agenda on the app or website for details)	
2:00-5:15pm 3 hours GCE/CRC/Tech	Emergency Medicine Track	Peninsula 4-7
2:10-5:25pm 3 hours GCE/CRC/Tech	Pain Management Track	Peninsula 1-3
2:30-5:45pm 3 hours GCE/CRC	Pharmacy Administrators' Workshop <i>4 Concurrent Sessions</i>	Canaveral 1-3/Biscayne 1

SATURDAY

6:45am-8:00am 1 hour Tech	Technician Breakfast Symposium	Biscayne
6:45am-5:30pm	Registration Desk Open	Peninsula Registration Desk
7:00-8:00am	Attendee Continental Breakfast	Atrium CD
7:00-8:00am	Breakfast Symposiums (see agenda on the app or website for details)	
7:00am-12:20pm 4 hours Tech	Technician Track	Biscayne 1
8:05-9:05am 1 hour GCE/Tech	Keynote Presentation	Peninsula 4-7
9:00-11:30am	Poster Session	Oceans Foyer
9:10am-12:25pm 3 hour GCE/CRC/Tech	Critical Care Track	Peninsula 4-7
9:10am-12:25pm 3 hours GCE/CRC/Tech	Geriatrics/Aging Population/Longevity Track	Peninsula 1-3
11:15am-12:15pm 1 hour GCE	Preceptor Development	Canaveral 1
11:30am-2:30pm	Exhibits (Staggered Attendee Lunch 12:15-1:15pm)	Oceans Ballroom
12:30-1:30pm	Lunch Symposiums (see agenda on the app or website for details)	
12:30pm	Past President's Luncheon	Palani Sailfish
12:45-2:00pm	Residency Showcase	Atrium AB
2:00-5:25pm	Student Track	Biscayne 2-3
2:10-5:25pm 3 hours GCE/CRC/Tech	Infectious Diseases Track REC	Peninsula 4-7
2:20-5:35pm 3 hours GCE/CRC/Tech	General Medicine Track REC	Peninsula 1-3
5:45-6:45pm	Mentor-Mentee Reception	Coral Ballroom
8:00-10:00pm	FSHP Celebration at Aquatica's AquaGlow!	<i>Must pre-purchase tickets!</i>

SUNDAY

7:00-7:30am	Attendee Continental Breakfast	Atrium CD
7:00am-1:00pm	Registration Desk Open	Peninsula Registration Desk
7:30-10:50am 3 hours GCE/CRC/Tech	Pharmacy Administration & Innovation Track	Peninsula 4-7
11:00am-1:00pm 2 hours GCE/Tech	Medication Error/Patient Safety	Peninsula 4-7

Total Hours Available: 18 GCE | 19 Tech | 12 CRC



will be recorded for on-demand access

FSHP On-Demand recordings will be available late-August.
If you attend the LIVE presentation you will NOT be able to claim credits for the recording of the same presentation.

On-Demand Registration
Per Presentation: Members \$25 / Non-Members \$50 | Per Track: Members \$75 / Non-Members \$150



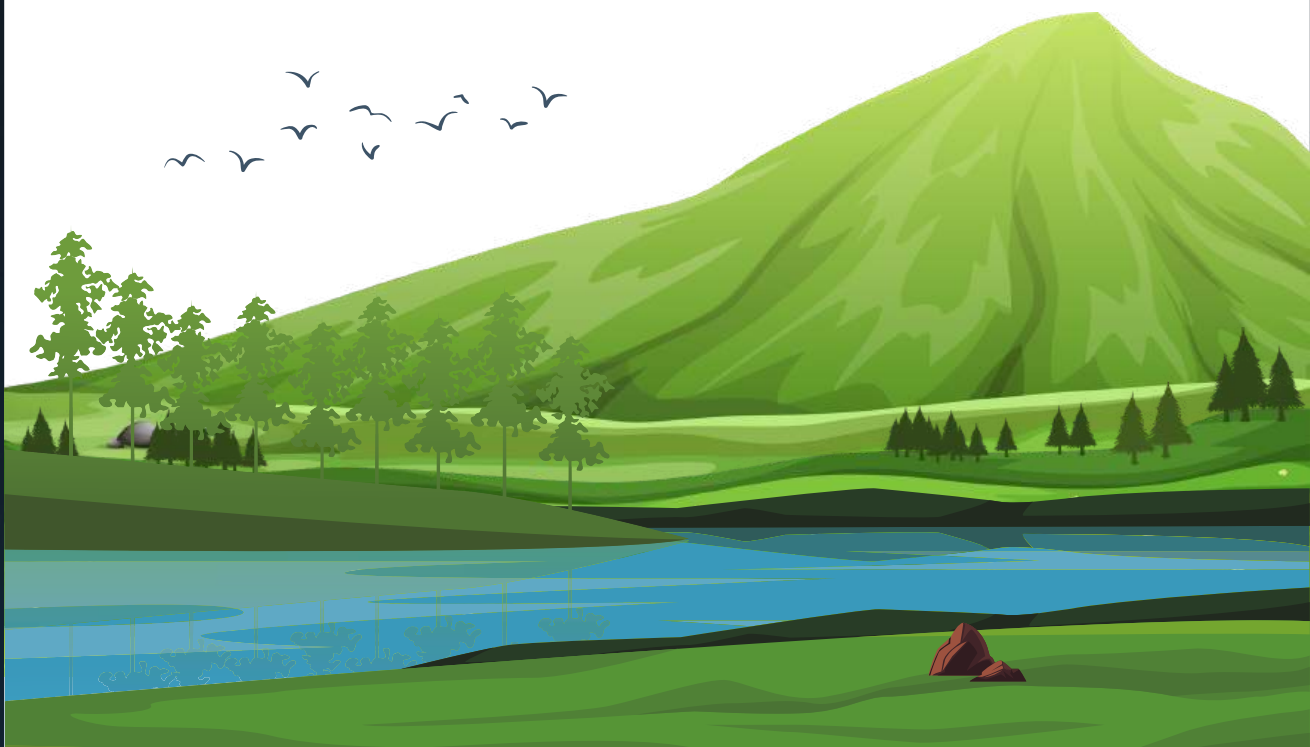
Sparkle Shine *Celebrate!* 60th Annual Meeting

Going Green!

In our ongoing efforts to improve, this year we will be cutting down waste by **not** providing printed event program books* or bags at the FSHP Annual Meeting. A limited amount of one-page Schedule-at-a-Glance handouts will be available.

To join us in our efforts, we encourage attendees to bring their own **bags, notetaking tools, and refillable water bottles**, as well as use the mobile app for the event (or access resources via our website).

**If you would like a printed program book, a physical/printed program book is available for \$60 that can be purchased as an add-on with registration. The program is available for free in digital format on the FSHP website and event app.*



General Info

Badge Kiosk Hours (Peninsula Registration Desk)

Thu 11:00am-4:00pm | **Fri** 7:00am-5:30pm | **Sat** 6:45am-5:30pm

Staffed Registration Desk Hours (Peninsula Registration Desk)

Thu 11:00am-4:00pm | **Fri** 7:00am-5:30pm | **Sat** 6:45am-5:30pm | **Sun** 7:00am-1:00pm

FSHP House of Delegates (Peninsula 4 Ballroom)

On Thursday, August 6, from 1:00-4:00pm, the FSHP Officers, Board of Directors and Delegates represented from the following: FSHP Past Presidents, Regional Societies, the Florida Board of Pharmacy, the Florida Pharmacy Association, FSHP Technician Members and Florida Colleges/Schools of Pharmacy will decide on the Society's stance on important issues within the profession of pharmacy and review and develop FSHP policy.

The Chair of the House of Delegates is Nicole Reardon, PharmD, BCPS, FCCM.

Awards Ceremony (Peninsula Ballroom)

On Friday, August 7, at 8:00am, come and help us congratulate FSHP Award recipients as part of the opening General Session of our 60th Annual Meeting.

Parking

There is a discounted daily fee of \$23.43 for resort guests and attendees that drive in. Parking for guests will automatically be included on your hotel bill. For drive in attendees, stop by the FSHP Registration Desk to pick up a voucher (one voucher per day) for the discounted parking rate. Valet parking rate is \$56.00 per night (plus tax and fees) and is not included in the room rate or discounted for FSHP Annual Meeting attendees.

Exhibit Program (Exhibit Hall-Oceans Ballroom)

Remember, the success of the Annual Meeting depends, in a large part, on the participation and support of the pharmaceutical and related industries. Please take time to visit the exhibit area and express thanks to those company representatives for their participation.

For safety considerations, children and guests are not allowed in the Exhibit Hall. Official registration badges must be worn at all times for admittance.

Exhibit Hours: Fri 11:30am-2:30pm | **Sat** 11:30am-2:30pm

Breakfast (Atrium CD) / Lunch (Oceans Ballroom) / Breaks (Atrium CD)

Meeting registration includes continental breakfast, lunch and beverage breaks. **These services are available for registered meeting attendees only.** Meeting badges will be checked upon entering the designated breakfast and lunch areas. Please check agenda for scheduled breakfast, lunch and break times and locations.

Poster Presentations (Oceans Ballroom Foyer)

Visit and support our poster session this year featuring pharmacists, residents and students presenting in the following categories: Innovative Pharmacy Practice and Original Research. The FSHP poster session will be held on **Saturday, August 8, at 9:30am**. Announcement of winners will be done during the Student Track and during the Sunday General Session. Posters will stay up until 3:00pm on Saturday. View poster listing in the app.

Residency Showcase (Atrium AB)

On Saturday, August 8, from 12:45-2:00pm, visit the FSHP Residency Showcase. Preceptors and Program Directors will be available to answer questions regarding their programs. You can find the Showcase listings in the app. **Sponsored by the FSHP Research and Education Foundation**

FSHP Foundation Fundraisers (Virtual & Exhibit Hall)

There are 3 different ways you can support the cause. You do not have to be a FSHP member to win. For more details on each fundraiser visit fshp.org/foundation-fundraiser or see details in the app.

1) Big Ticket Raffle - Buy tickets online to enter the raffle for the "big" prize of your choice. **\$10 for one ticket or \$25 for three. You do not have to be present to win.**

2) 50/50 Raffle - Make a donation of **\$50 or more** through the 50/50 raffle link for a chance to win half of the total amount raised. Raffle will close on Saturday, August 8 at 2:30pm. **You do not have to be present to win.**

3) Wine Toss - Test your skill by tossing a ring over the neck of the bottle to win it! **\$2 for one ring or \$5 for three rings.** Purchase 9 or more rings (\$15+) for a chance to win a bundle of wine bottles left at the end. Visit the Wine Toss in the Exhibit Hall to participate. **You must be present to win the wine raffle!**

Continuing Education

The FSHP Annual Meeting programming has been designed to enhance the knowledge, skills, and abilities of pharmacists and associated personnel in health care settings as we focus on important issues relevant to contemporary pharmacy practice.

Target Audience

The FSHP Annual Meeting programs were developed to meet the needs of pharmacists and pharmacy technicians in a variety of practice settings.

General C.E.

The Florida Society of Health-System Pharmacists, Inc. is accredited by the Accreditation Council for Pharmacy Education as a provider of continuing pharmacy education. The continuing education programs for this meeting are Application and Knowledge-Based Continuing Pharmacy Education (CPE) activities, which means that information that is provided will be in at least 60 minute lectures or presentations of facts that participants should be able to apply by means of learning assessment questions. See individual presentations for ACPE UANs.

6.0 hours max of C.E. for Pharmacists and Pharmacy Technicians on **Friday**
7.0 hours max of C.E. for Pharmacists and **8.0 hours max** of C.E. for Pharmacy Technicians on **Saturday**
5.0 hours max of C.E. for Pharmacists and Pharmacy Technicians on **Sunday**

Consultant Re-Certification (CRC), Medication Errors and Validation of Prescription for Controlled Substances

The Florida Society of Health-System Pharmacists is approved by the Florida Board of Pharmacy as a provider of Consultant License Re-Certification, Validation of Prescription for Controlled Substances and Medication Errors C.E.

- **3.0 hours** max of **CRC** C.E. on **Friday**
- **2.0 hours** of **Controlled Substances** on **Friday**
- **6.0 hours** max of **CRC** C.E. on **Saturday**
- **3.0 hours** max of **CRC** C.E. on **Sunday**
- **2.0 hours** of Safety on **Medication Safety/Patient Safety** on **Sunday**

FOR CONSULTANT RE-CERTIFICATION CREDITS (CRC), YOU MUST STAY WITHIN THE 3.0 HOUR TRACK

Claiming Credits

Please print out and complete your CE Tracking Form in this Program Book to track the courses that you attend. **You must claim your CE credits via LecturePanda® within 30 days following the conclusion of the event.** Link to LecturePanda can be found on the CE Tracking page in this book, in the event app, on the event website, and **instructions were sent to the email address you used to register for this event.**

You can enter the courses as you attend, or at the end of the meeting, but note that credits will not be submitted to CE Broker and CPE Monitor until the conclusion of the meeting on Sunday, August 9.

Meeting Evaluation

FSHP would appreciate your constructive and appropriate feedback on presentation information, speakers and other aspects of the meeting. Please provide this feedback in LecturePanda as you submit your credits.

Thanks in advance!

FSHP Membership

If you received the member registration discount...

Those who received the member discount when registering for this event **must have a current FSHP member account at the time of the event** to be able to claim CE.

Scan the QR code or visit fshp.org/members/membership to check your membership status and renew.



SCAN ME



7:00am-5:30pm REGISTRATION DESK OPEN (*Peninsula Registration Desk*)
7:00-8:00am ATTENDEE CONTINENTAL BREAKFAST (*Atrium CD*)



7:00-8:00am BREAKFAST SYMPOSIUM (*Pre-registration is required*)
Sponsored by: Takeda Hematology (Coral Ballroom)

General Session | 3.0 Hours of CE
Room: Peninsula Ballroom



7:45am WELCOME | FSHP President: Madeline Camejo, MS, PharmD, CPEL
8:00am AWARDS CEREMONY

Moderator(s)/Program Planner(s): Rohan Shah, BS Pharm, MS, MBA / Michael DeCoske, PharmD, FASHP, CPEL

9:00-11:00am 2.0 hours of C.E. (GCE/Tech) **ACPE UAN 0163-0000-CONTROLLED SUBSTANCES: The Evolving Landscape of Controlled Substances: 2026 Regulatory Updates, Technology Innovations, and Stewardship Best Practices**

Matthew J. Seamon, PharmD, JD, FASHP, Professor & Chair, Department of Pharmacy Practice, Nova Southeastern University College of Pharmacy, Davie, FL / Jessica Lemoine, PharmD, MS, CPh, Director, Pharmacy Services Doctor Hospital, Baptist Health South Florida, Miami, FL

PHARMACIST OBJECTIVES:

- Describe recent federal and Florida regulatory changes impacting controlled substance prescribing and dispensing.
- Evaluate opioid stewardship strategies, including PDMP utilization, naloxone co-prescribing, and risk mitigation tools.
- Identify best practices for diversion prevention using monitoring systems and team-based approaches.
- Analyze the impact of telehealth and DEA special registration proposals on controlled substance prescribing.
- Discuss strategies for integrating technology and predictive analytics into opioid misuse prevention programs.

TECHNICIAN OBJECTIVES:

- Explain technician responsibilities related to controlled substance handling, documentation, and reconciliation.
- Recognize signs of diversion and misuse and outline appropriate reporting procedures.
- Review approaches to supporting opioid safety initiatives, including PDMP assistance, patient education, and naloxone distribution.
- Discuss workflow improvements that enhance accountability and accuracy in controlled substance management.
- Describe team-based strategies that support improved controlled substance security and patient safety.



11:00-11:20am BREAK (*Atrium CD*)

Moderator(s)/Program Planner(s): Cher Enderby, PharmD, EMBA, BCPS, FASHP, FFSHP / Jessica Andrews, PharmD, BCCCP

11:20am-12:20pm 1.0 hour of C.E. (GCE/Tech) **ACPE UAN 0163-0000-2026 Legislative and Regulatory Update**

Chris Dawson, Shareholder - Government Affairs Advisor, GrayRobinson, Orlando, FL / Kenneth Komorny, BS Pharm, PharmD, BCPS, Vice President, Chief Pharmacy Officer, Moffitt Cancer Center, Tampa, FL / Mark Mikhael, PharmD, Chief Executive Officer, Olympia, Longwood, FL / Kathleen Baldwin, PharmD, BCPS, Clinical Pharm Practitioner Critical Care, Baptist Medical Center South, Jacksonville, FL / Gallop Franklin, District: 8 Democrat, Gadsden and Part of Leon, Tallahassee, FL

PHARMACIST AND TECHNICIAN OBJECTIVES:

- Evaluate the pharmacy legislation adopted by the Florida Legislature.
- Analyze the regulatory changes impacting health-system pharmacy practice.
- Review advocacy strategies to increase participation in state initiatives.



11:30am-2:30pm EXHIBITS

12:20-1:20pm ATTENDEE LUNCH (Oceans Ballroom)



12:30-1:30pm LUNCH SYMPOSIUMS (*Pre-registration is required*)

Sponsored by: Institute for Safe Medication Practices (ISMP) (Coral Ballroom)

Sponsored by: Alexion (Merrit Ballroom)

Emergency Medicine Track | 3.0 Hours of CE
Room: Peninsula 4-7

Moderator(s)/Program Planner(s): Chloe Gernhard, PharmD, BCPS, CPh / Amanda Batog, PharmD, BCCCP / Danielle Padgett, PharmD, BCCCP

2:00-3:00pm 1.0 hour of C.E. (GCE/CRC/Tech) **ACPE UAN 0163-0000-**

Hidden Hazards of the Natural World: Toxicology Essentials for Pharmacists

KC O'Brien, PharmD, DABAT, BCEMP, Clinical Pharmacist - Emergency Medicine, Orlando Regional Medical Center, Orlando, FL

PHARMACIST OBJECTIVES:

- Identify sources of natural toxins and recognize their characteristic clinical presentations.
- Differentiate between major toxin mechanisms and envenomation pathophysiology to guide appropriate triage, supportive care, and evidence-based pharmacologic management.
- Apply current recommendations for prevention, patient counseling, and risk mitigation related to environmental poisonings.

TECHNICIAN OBJECTIVES:

- Identify sources of natural toxins and recognize their characteristic clinical presentations.
- Differentiate between major toxin mechanisms and envenomation pathophysiology to guide appropriate triage, supportive care, and evidence-based pharmacologic management.



3:00-3:15pm BREAK (*Atrium CD*)

Emergency Medicine Track *continued* | 3.0 Hours of CE Room: Peninsula 4-7

3:15-4:15pm 1.0 hour of C.E. (GCE/CRC/Tech) **ACPE UAN 0163-0000-**

Expanding our horizons? The role of extended window fibrinolytics in acute ischemic stroke

Joshua McBride, PharmD, BCCCP, Lead Clinical Pharmacy Specialist - Neuro/Trauma ICU, Health First Holmes Regional Medical Center, Melbourne, FL

PHARMACIST OBJECTIVES:

- Review available pharmacologic options for treatment of acute ischemic stroke, including special populations such as pediatrics and pregnancy.
- Discuss limitations and current guideline recommendations for treatment of acute ischemic stroke.
- Appraise available literature for efficacy and safety of fibrinolytic use beyond 4.5 hours from last known well time.
- Apply current literature to a patient case to determine appropriateness of expanded window fibrinolytic use.

TECHNICIAN OBJECTIVES:

- Review available pharmacologic options for treatment of acute ischemic stroke, including special populations such as pediatrics and pregnancy.
- Discuss limitations and current guideline recommendations for treatment of acute ischemic stroke.

4:15-5:15pm 1.0 hour of C.E. (GCE/CRC/Tech) **ACPE UAN 0163-0000-**

Pulse Check: Reviewing the Management of the Cardiac Arrest Patient - What They Don't Teach You in ACLS

Jazmyne Jackson, PharmD, Emergency Medicine Clinical Specialist, Memorial Healthcare, Fort Lauderdale, FL / Patrick Funderburk, PharmD, BCEMP, Clinical Pharmacy Specialist – Emergency Medicine, Memorial Hospital West, Pembroke Pines, FL

PHARMACIST OBJECTIVES:

- Evaluate evidence for emerging therapies for refractory ventricular dysthymias include dual sequence defibrillation, vector change, beta blockers, and stellate ganglion block.
- Describe how underlying etiologies (e.g., hypothermia, hyperkalemia, severe acidosis, toxicologic causes, pregnancy, pulmonary embolism) impact medication selection or dosing outside standard ACLS algorithms.
- Design strategies for optimizing pharmacy workflow during cardiac arrest events, including medication preparation, cognitive aids, and minimizing delays for non-standard medications.
- Apply evidence for the use of alternative cardiac arrest escalation medications and tools to a patient case.

TECHNICIAN OBJECTIVES:

- Identify critical medications necessary in cardiac arrest management.
- Design strategies for optimizing pharmacy workflow during cardiac arrest events, including medication preparation, cognitive aids, and minimizing delays for non-standard medications.

Pain Management Track | 3.0 Hours of CE Room: Peninsula 1-3

Moderator(s)/Program Planner(s): Stephanie Scuotto, PharmD, BCPS / Oscar Santalo, PharmD, MBA, BCPS / Wai Tak Vince Sung, PharmD, MBA, BCOP BCSCP

2:10-3:10pm 1.0 hour of C.E. (GCE/CRC/Tech) **ACPE UAN 0163-0000-**

Reframing Opioid Therapy: Buprenorphine's Role in Modern Pain Management

Joseph Cammilleri, PharmD, BCACP, CPE, Clinical Pharmacist, UF Health Jacksonville, Orange Park, FL

PHARMACIST OBJECTIVES:

- Outline the key features that make buprenorphine's pharmacology unique.
- List evidence-based therapeutic uses of buprenorphine.
- Evaluate the role of buprenorphine as a first-line opioid for chronic pain management.
- Formulate an acute pain management plan for patients maintained on buprenorphine.

TECHNICIAN OBJECTIVES:

- Understand features that make buprenorphine's pharmacology unique.
- List evidence-based therapeutic uses of buprenorphine.
- Describe the role of buprenorphine as a first-line opioid for chronic pain management.
- Identify an acute pain management plan for patients maintained on buprenorphine.

3:10-4:10pm 1.0 hour of C.E. (GCE/CRC/Tech) **ACPE UAN 0163-0000-**

Pain Management: Fundamentals of an Opioid Stewardship Program

Shannon Robb, PharmD, BCPS, Clinical Pharmacy Specialist-Pain Management, AdventHealth Tampa, St Petersburg, FL

PHARMACIST OBJECTIVES:

- Define opioids stewardship and identify core components of an effective program.
- Apply evidence-based strategies to optimize opioid prescribing across acute, chronic, perioperative, and palliative care settings.
- Evaluate and implement risk-mitigation strategies to reduce opioid-related adverse events and misuse.
- Develop measurable quality metrics to evaluate and sustain opioid stewardship initiatives within a health system.
- Outline the clinical pharmacist's leadership role in opioid stewardship programs.

TECHNICIAN OBJECTIVES:

- *Recognize the definition of opioid stewardship.*
- *Identify the components of an effective program.*
- *Discuss potential strategies to optimize opioid prescribing and mitigate risk.*
- *Describe potential quality metrics that could be utilized to evaluate an opioid stewardship program.*
- *Explain the role of the pharmacist and pharmacy technician in an opioid stewardship program.*



4:10-4:25pm BREAK (Atrium CD)

4:25-5:25pm 1.0 hour of C.E. (GCE/CRC/Tech) **ACPE UAN 0163-000-**

Smarter Pain Control: Leveraging Multimodal Strategies for Better Patient Outcomes

Lisa Luciani, PharmD, BCPS, Pain Management, Opioid Safety, and PDMP (PMOP) Coordinator, James E Van Zandt VA Medical Center, Altoona, PA

PHARMACIST OBJECTIVES:

- Define multimodal pain management and describe its core principles in pain care.
- Explain the pharmacologic and nonpharmacologic components commonly used in multimodal pain strategies.
- Summarize the current evidence supporting multimodal pain management.
- Apply evidence-based multimodal strategies to optimize individualized pain management plans in clinical practice.

TECHNICIAN OBJECTIVES:

- Define multimodal pain management and describe its core principles in pain care.
- Review the pharmacologic and non-pharmacologic components commonly used in multimodal pain strategies.

Pharmacy Administrators Workshop | 3.0 Hours of CE
4 Concurrent Sessions (Pre-registration required)
Rooms: Canaveral 1-3/Biscayne 1

Moderator(s)/Program Planner(s): Angelica Berni, MS, PharmD, BCPS, CPh / Eric Renker, BS Pharm, PharmD / Michele Weizer, PharmD, BCPS

2:30-5:45pm 3.0 hours of C.E. (GCE/CRC) **ACPE UAN 0163-0000-**

Session Facilitators:

Petra Estep, PharmD, MHA, BCPS, CPh, Director of Pharmacy, Baptist Medical Center Jacksonville Wolfson Children's Hospital, Jacksonville, FL / **Amy Rosenberg**, PharmD, BCPS, Director - Acute Care Pharmacy Services, UF Health Shands Hospital, Gainesville FL / **Michael DeCoske**, PharmD, FASHP, CPEL, Assistant Vice President, Baptist Health South Florida, Miami, FL / **Les Loudon**, PharmD, MS, Director of Pharmacy Services - West Region, BayCare Health System, Tampa, FL / **Anour Ben Hassen**, CNMT, PharmD, CPh, Controlled Substance Coordinator, Broward Health, Fort Lauderdale, FL / **Ben Phillip**, MS, Pharm D, Regional Director of Pharmacy, BayCare, Tampa, FL / **Richard Montgomery**, BS Pharm, MBA, Corporate Director for Pharmacy Contracting and Sourcing, AdventHealth, Altamonte Springs, FL / **Mike Magee**, MS, RPH, FASHP, Vice President - Chief Pharmacy Officer, BayCare Health System, Tampa, FL

PHARMACIST OBJECTIVES:

- Identify and explain the various strategies used by healthcare institutions to manage unprecedented product shortages, including managing contract relationships, interdisciplinary approach, clinical changes and ethical considerations.
- Discuss unique challenges of long-term emergency and disaster preparedness compared to short-term responses, and identify key strategies to prepare for extended disruptions.
- Explore the role of IT systems in tracking and automating healthcare operations, with a focus on predictive modeling and data-driven decision-making.
- Identify key strategies for supporting succession planning within the pharmacy team, even in the absence of formal professional development programs.
- Analyze how pharmacy leaders can stay ahead of evolving healthcare trends, including technological advancements, changes in regulations, and emerging healthcare models.
- Explore strategies for staying up to date on the financial needs and priorities across different disciplines within the healthcare system, exploring strategies to balance cost-effectiveness with quality of care in a resource-constrained environment.

Technician Track | 4.0 Hours of CE Room: Biscayne 1

Moderator(s)/Program Planner(s): Tara McNulty, BS, CPhT, RPhT / Elizabeth Lewallen, CPhT, RPhT / Sheryl MacKenzie, BS, CPhT, RPhT

6:45am-8:00am 1.0 hour of C.E. (Tech) **ACPE UAN 0163-0000-TECHNICIAN TRACK BREAKFAST SYMPOSIUM**

Sparkle Through Innovation: How AI and Robotics Elevate the Pharmacy Technician Role

Jenny Sippel-Tompkins, PhD, RPh, CPh, Director of Pharmacy, AdventHealth, Orlando, FL / Melissa Gajadhar, CPhT, RPhT, Pharmacy Inventory Integrity Analyst, AdventHealth Central Florida Division, Orlando, FL

TECHNICIAN OBJECTIVES:

- Describe how robotics and AI are shaping pharmacy technician practice and supporting technician workflows.
- Identify how pharmacy technician roles are evolving in technology driven pharmacy settings.
- Recognize key skills that remain essential and apply strategies to stay adaptable and future ready.



7:00am-5:30pm REGISTRATION DESK OPEN *(Peninsula Registration Desk)*

7:00-8:00am ATTENDEE CONTINENTAL BREAKFAST *(Atrium CD)*



7:00-8:00am BREAKFAST SYMPOSIUM *(Pre-registration is required)*

Sponsored by: Takeda Pharmaceutical (Coral Ballroom)



KEYNOTE PRESENTATION

1.0 Hour of CE | Room: Peninsula 4-7



Make Moments Matter

Small moments matter more than we realize. And leaders who understand that can create ripple effects that reach far beyond what they'll ever see.

[Read more about our keynote in the mobile app!](#)

Chris Rollins



Moderator(s)/Program Planner(s): Cher Enderby, PharmD, EMBA, BCPS, FASHP, FFSHP / Jessica Andrews, PharmD, BCCCP

8:05-9:05am 1.0 hour of C.E. (GCE/Tech) **ACPE UAN 0163-0000-MAKE MOMENTS MATTER: Sparking Trust and Belonging Through the Ripple Effects of Human Connection**

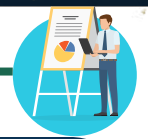
Chris Rollins, Founder & CEO, Ripple Effect Leadership, Tampa, FL

PHARMACIST AND TECHNICIAN OBJECTIVES:

- Describe how everyday interactions create a ripple effect that contributes to trust, connection, and meaningful impact.
- Identify barriers that dim the connection and trust within teams and relationships.
- Apply ripple effect behaviors that strengthen collaboration, support belonging, and celebrate the unique contributions of individuals.



9:00-11:30am POSTER SESSION (Oceans Foyer)



Technician Track *continued* | 4.0 Hours of CE Room: Biscayne 1

Moderator(s)/Program Planner(s): Angelica Berni, MS, PharmD, BCPS, CPh / Tara McNulty, BS, CPhT, RPhT / Elizabeth Lewallen, CPhT, RPhT / Sheryl MacKenzie, BS, CPhT, RPhT

9:10-10:10am 1.0 hour of C.E. (Tech) **ACPE UAN 0163-0000-**

Radiate Your Potential: Expanding Technician Careers Through Skills and Credentials

Tara McNulty, BS, CPhT, RPhT, Manager - Pharmacy Quality Improvement, Centene Corporation - Pharmacy Services, Orlando, FL / Sheryl MacKenzie, BS, CPhT, RPhT, Pharmacy Supply Revenue Analyst, Shriners Hospitals for Children, Tampa, FL

TECHNICIAN OBJECTIVES:

- Describe emerging non-traditional and advanced pharmacy technician career paths and the skills needed to succeed in them.
- Identify key technician certifications and credentials that support career advancement and expand practice opportunities.
- Apply concepts of career growth and role expansion through a case study illustrating a technician's progression from a traditional role to an advanced or non-traditional position using certifications and skill development.

10:10-11:10am 1.0 hour of C.E. (Tech) **ACPE UAN 0163-0000-**

Celebrate the Difference: How Technicians Strengthen Inventory and Crisis Readiness

Crystal Lipko, CPhT, RPhT, Pharmacy Technician Supervisor, HCA Florida Putnam Hospital, Palatka, FL / Holly Lofland, CPhT, RPhT, MS, FSED Pharmacy Supply Tech, HCA Florida Capital Hospital, Tallahassee, FL

TECHNICIAN OBJECTIVES:

- Describe the technician's role in maintaining accurate inventory and supporting pharmacy operations during drug shortages and product recalls.
- Identify strategies technicians use to monitor inventory trends, communicate supply issues, and contribute to preparedness planning.
- Apply technician responsibilities in disaster preparedness and emergency response through a case study that demonstrates coordination, communication, and continuity-of-care support during a crisis.



11:10-11:20am BREAK (Atrium CD)

11:20am-12:20pm 1.0 hour of C.E. (Tech) **ACPE UAN 0163-0000-**

Shine Beyond Burnout: Strategies for Restoring Balance and Well-Being

Erin Dorval, PharmD, CPh, Pharmacy Clinical Ambulatory Specialist - Sports Medicine, Baptist Health South Florida, Miami, FL / Melissa Marmanillo, MHSA, CPhT, 340B ACE, Manager Pharmacy Business Operations & Procurement, Baptist Health South Florida, Miami, FL

TECHNICIAN OBJECTIVES:

- Identify signs, symptoms, and contributing factors of stress and burnout within pharmacy practice.
- Explain the impact of burnout on personal well-being, team dynamics, and patient care, and recognize when additional support or intervention may be needed.
- Apply practical strategies to identify early signs of burnout in oneself and colleagues to promote a healthier work environment.

SATURDAY

Critical Care Track | 3.0 Hours of CE Room: Peninsula 4-7

Moderator(s)/Program Planner(s): Chancey Carothers, PharmD, BCCCP / Kyle Bergen, PharmD, BCCP

9:10-10:10am 1.0 hour of C.E. (GCE/CRC/Tech) **ACPE UAN 0163-0000-**

Shaken with Salt: Managing Sodium Imbalances in Neurocritical Care

Karen Berger, PharmD, FASHP, FCCM, BCPS, BCCCP, Assistant Professor - Pharmacy Practice, Nova Southeastern University Barry & Judy Silverman College of Pharmacy, Boca Raton, FL

PHARMACIST OBJECTIVES:

- Explain the mechanisms and triggers for each sodium disorder and their impacts on sodium and water balance.
- Analyze serum sodium, urine osmolality, and urine sodium values to distinguish SIADH, DI, and CSW.
- Compare therapeutic options such as hypertonic saline, vasopressin analogs, and fluid management for each condition.

TECHNICIAN OBJECTIVES:

- Recognize SIADH, DI, and CSW as key conditions affecting sodium balance in critically ill patients.
- Identify therapeutic agents used in the treatment of sodium disorders in critically ill patients.

10:10-11:10am 1.0 hour of C.E. (GCE/CRC/Tech) **ACPE UAN 0163-0000-**

Renal Rescue: Pharmacist Essentials for Continuous Renal Replacement Therapy

Rita Gayed PharmD, BCCCP, FCCM, Critical Care Clinical Pharmacist Specialist - MICU, Orlando Health Orlando Regional Medical Center, Orlando, FL

PHARMACIST OBJECTIVES:

- Differentiate between modalities of continuous renal replacement therapy (CRRT).
- Discuss pharmacokinetics considerations of medication use in patients receiving CRRT.
- Compare different CRRT anticoagulation strategies.

TECHNICIAN OBJECTIVES:

- Discuss the indications for CRRT in critically ill patients.
- Recognize changes to medication dosing in patients receiving CRRT.



11:10-11:25am BREAK (Atrium CD)

11:25am-12:25pm 1.0 hour of C.E. (GCE/CRC/Tech) **ACPE UAN 0163-0000-**
Hemodynamics Under Fire: Pharmacologic and Device-Based Management of Cardiogenic Shock in the ICU

Kyle Volland, PharmD, BCCCP, Cardiac Critical Care Pharmacist, Baptist Medical Center Downtown, Jacksonville, FL

PHARMACIST OBJECTIVES:

- Describe the hemodynamic disturbances characteristic of cardiogenic shock and interpret key ICU monitoring parameters to guide therapeutic decisions.
- Differentiate the pharmacologic roles, mechanisms, and clinical indications of inotropes, vasopressors, and afterload-modifying agents used in cardiogenic shock.
- Explain the function, indications, and ICU considerations for commonly used mechanical circulatory support (MCS) devices and clarify how these devices interact with pharmacotherapy.
- Assess the pharmacokinetic and pharmacodynamic challenges associated with MCS support (such as altered drug clearance, anticoagulation needs, and circuit-related drug sequestration) and incorporate these into medication management plans.

TECHNICIAN OBJECTIVES:

- Identify commonly used medications in cardiogenic shock and recognize their storage, labeling, and handling requirements in the ICU setting.
- Recognize the basic purpose of MCS devices and understand how they may influence medication preparation, urgency, or workflow in the pharmacy.

Geriatrics/Aging Population/Longevity Track | 3.0 Hours of CE
Room: Peninsula 1-3

Moderator(s)/Program Planner(s): [Robert Krajevich, PharmD, BCPS](#) / [Chrissy Tabulov, PharmD, BCPPS](#)

9:10-10:10am 1.0 hour of C.E. (GCE/CRC/Tech) **ACPE UAN 0163-0000-**
Shining a Light on Longevity: The Pharmacist's Role in Healthy Aging

Melissa Kacou, PharmD, MHA, Chief Operating Officer, Progress Pharmacy, Wellington, FL

PHARMACIST OBJECTIVES:

- Describe key concepts of longevity and health span, including biological, clinical, and medication-related factors that influence healthy aging.
- Identify age-related pharmacokinetic and pharmacodynamic changes and common medication-related risks associated with aging populations.
- Explain the evolving role of pharmacists in supporting longevity through medication management, preventive care, longevity assessments, and interprofessional collaboration.

TECHNICIAN OBJECTIVES:

- Describe foundational concepts of longevity and health span and recognize factors that influence healthy aging.
- Recognize age-related changes that may affect medication use in older adults and describe how these considerations impact pharmacy workflow and safety practices.
- Explain the pharmacy technician's role in supporting healthy aging through safe medication practices and team-based care.



10:10-10:25am BREAK (*Royal Ballroom*)

Geriatrics/Aging Population/Longevity *continued* | 3.0 Hours of CE Room: Peninsula 1-3

10:25-11:25am 1.0 hour of C.E. (GCE/CRC/Tech) **ACPE UAN 0163-0000-**

From Hot Flashes to Hot Topics: Menopause Therapies, Label Changes, and Pharmacy Practice Updates

Jasmine Cutler, PharmD, CPh, Assistant Professor, University of South Florida, Tampa, FL

PHARMACIST OBJECTIVES:

- Evaluate current pharmacologic and nonpharmacologic therapy options for managing menopausal symptoms based on evidence-based, patient-specific considerations.
- Discuss recent updates in FDA labeling, safety warnings, and clinical guideline recommendations for menopausal therapies to optimize patient care.
- Apply the Pharmacists' Patient Care Process to counsel patients, assess appropriateness of therapy, and collaborate with prescribers in developing individualized treatment plans for menopause management.

TECHNICIAN OBJECTIVES:

- Identify prescription and nonprescription treatment options for menopausal symptoms and their general uses.
- Recognize key labeling changes and safety considerations for menopausal therapies that require pharmacist intervention.
- Describe the pharmacy technician's role in menopause management, including supporting medication access, reinforcing pharmacist-provided education, identifying situations requiring pharmacist referral, and promoting adherence and patient safety.

11:25am-12:25pm 1.0 hour of C.E. (GCE/CRC/Tech) **ACPE UAN 0163-0000-**

Challenges and Solutions for Psychopharmacology Management in the Geriatric Patient

Jose A Rey, MS, PharmD, BCPP, FAAPP, Professor of Pharmacy Practice, Professor & Chair, Nova Southeastern University, Ft. Lauderdale, FL

PHARMACIST OBJECTIVES:

- Identify common drug-related problems in the geriatric patient struggling with mental health issues.
- Recommend evidence-based treatment options to manage the common mental health disorders encountered in the geriatric population.
- Recognize opportunities for deprescribing and non-pharmacological interventions in the geriatric population.

TECHNICIAN OBJECTIVES:

- Identify common drug-related problems in the geriatric patient struggling with mental health issues.
- Describe treatment options to manage the common mental health disorders encountered in the geriatric population.
- Recognize opportunities for deprescribing and non-pharmacological interventions in the geriatric population.

Preceptor Development | 1.0 Hour of CE Room: Canaveral 1

Moderator/Program Planner: Denise Elia, PharmD / Yan Ader, PharmD, BCPS

11:15am-12:15pm 1.0 hour of C.E. (GCE) **ACPE UAN 0163-0000-**

Trust, But Verify: Entrustment Levels Every Preceptor Should Master

Melissa Ruble, PharmD, BCPS, FFSHP, Assistant Dean of Experiential Programs & Professor, University of South Florida, Taneja College of Pharmacy, / Margareth Larose-Pierre, PharmD, Founding Campus Dean - Director/Professor, Florida Agricultural & Mechanical University, College of Pharmacy and Pharmaceutical Sciences,

PHARMACIST OBJECTIVES:

- Summarize critical updates to the AACP Standards and their impact on competency-based assessments within experiential learning.
- Apply entrustment levels to assess student performance using updated assessment tools.
- Develop a plan to implement accurate entrustment ratings and effective feedback into student experiential evaluations.



11:30am-2:30pm EXHIBITS (Oceans Ballroom)
12:15-12:25pm STAGGERED ATTENDEE LUNCH (Oceans Ballroom)



12:30-1:30pm LUNCH SYMPOSIUMS (Pre-registration is required)
Sponsored by: Eli Lilly & Co. (Coral Ballroom)
Sponsored by: Vertex Pharmaceuticals (Merrit Ballroom)



12:30pm PAST PRESIDENT'S LUNCHEON (Palani Sailfish)



12:45-2:00pm RESIDENCY SHOWCASE (Atrium AB)



Student Track Rooms: Biscayne 2-3



2:00pm STUDENT POSTER AWARD

Moderator(s)/Program Planner(s): Erika Dittmar, PharmD, BCPS / Jeremy Espeut, PharmD, MBA, MS / Denise Eila, PharmD / Kate Luong

2:00-3:00pm 1.0 hour **Room: Biscayne 2**

Student Chapter Quiz Bowl - hosted by Erwin Lanzas, PharmD, PGY1 CPAL Resident, Baptist Health South Florida, Miami, FL

3:10-4:10pm 1.0 hour **Room: Biscayne 3**

Inside the ICU: A Day in the Life of a PGY2 Pharmacy Resident

Judith Ramos, PharmD, BSPS, Pharmacy Resident, Lee Health - Gulf Coast Medical Center, Fort Myers, FL / Holly Rainbow, PharmD, PGY2 Critical Care Resident, Orlando Regional Medical Center, Orlando, FL / Grace Jipping, PharmD, PGY-2 Emergency Medicine Resident, Tallahassee Memorial, Tallahassee, FL

OBJECTIVES:

- Discuss the daily responsibilities of a PGY2 Critical Care Pharmacy Resident.
- Identify the clinical roles of a pharmacy resident during ICU rounds and patient care activities.
- Explain the structure and key learning opportunities within a critical care pharmacy residency.



4:10-4:25pm **BREAK** (Atrium CD)

4:25-5:25pm 1.0 hour **Room: Biscayne 3**

Talk the Talk: Strategies for Excelling in Pharmacy Interviews

Karen Berger, PharmD, FASHP, FCCM, BCPS, BCCCP, Assistant Professor - Pharmacy Practice, Nova Southeastern University Barry & Judy Silverman College of Pharmacy, Davie, FL

Panelists: Sanil Kanjookaran, PharmD, LSSYB, Pharmacy Operations Supervisor, Baptist Hospital of Miami, Miami, FL / Jamie Ziggas, PharmD, MS, BCOP, PGY1 Residency Director and Education Coordinator, UF Health Shands Hospital, Gainesville, FL / Brandon Hobbs, PharmD, BCCCP, FCCM, PGY-2 Critical Care Residency Program Director, Orlando Health, Orlando, FL

OBJECTIVES:

- Describe common pharmacy interview formats, including behavioral, situational, and clinical interviews.
- Identify appropriate interview etiquette, including professional communication and follow-up practices.
- Discuss best practices for developing clear, confident, and impactful interview responses.

Infectious Diseases Track | 3.0 Hours of CE **Room: Peninsula 4-7**

Moderator(s)/Program Planner(s): Rim Assil, PharmD, MBA / Carriette Saint-Phard, PharmD, BS, PharmD, BCPS, CPh

2:10-3:10pm 1.0 hour of C.E. (GCE/CRC/Tech) **ACPE UAN 0163-0000-**

Penicillin Allergy Label (PAL) is Not Your Friend

Kevin Epps, PharmD, RPh, BCPS, BCIDP, Antimicrobial Stewardship Pharmacist, Mayo Clinic, Jacksonville, FL

PHARMACIST OBJECTIVES:

- Discuss the cross reactivity between penicillin and cephalosporins.
- Review the classifications of hypersensitivity reactions.
- Analyze and apply the Drug Allergy: 2022 Practice Parameter Update to patient care.
- Discuss the implications of using second line agents for surgical prophylaxis.
- Discuss the professional liability of prescribing beta-lactams in patients with PCN allergy.

TECHNICIAN OBJECTIVES:

- Recognize differences between true allergic reactions and common medication side effects as reported by patients.
- Identify when allergy information should be clarified or escalated to the pharmacist.

3:10-4:10pm 1.0 hour of C.E. (GCE/CRC/Tech) **ACPE UAN 0163-0000-**

Tiny Pathogen, Big Problem: 2025 Updates in the Treatment and Prevention of Tularemia

Tim Gauthier, PharmD, BCPS, BCIDP, Antimicrobial Stewardship Clinical Program Manager, Baptist Health, Miami, FL

PHARMACIST OBJECTIVES:

- Describe the epidemiology, transmission routes, and clinical manifestations of tularemia.
- Discuss the classification of tularemia as a Tier 1 Select Agent with bioterrorism potential and its implications for emergency preparedness.
- Evaluate first-line and alternative antimicrobial treatment options for tularemia.

TECHNICIAN OBJECTIVES:

- Explain the difference between treatment and post-exposure prophylaxis medications.
- Identify first-line antimicrobial agents recommended for tularemia treatment and post-exposure prophylaxis.



4:10-4:25am BREAK (Atrium CD)

Infectious Diseases Track *continued* | 3.0 Hours of CE Room: Peninsula 4-7

4:25-5:25pm 1.0 hour of C.E. (GCE/CRC/Tech) **ACPE UAN 0163-0000-** ***Needle-stick to Next Steps: Occupational and Nonoccupational HIV Postexposure Prophylaxis Guideline Updates***

Julia Gonzalez, PharmD, MS, BCPS, CPh, System Formulary Coordinator, Broward Health, Ft. Lauderdale, FL

PHARMACIST OBJECTIVES:

- Differentiate between occupational and nonoccupational HIV exposures requiring PEP.
- Compare recommended first-line and alternative HIV PEP regimens.
- Evaluate common adverse effects associated with first-line PEP medications.
- Assess safe and effective PEP options for pregnancy, breastfeeding, drug-drug interactions, and renal impairment.

TECHNICIAN OBJECTIVES:

- Identify first line HIV PEP medications
- Differentiate between occupational and nonoccupational exposure situations

General Medicine Track | 3.0 Hours of CE Room: Peninsula 1-3

Moderator(s)/Program Planner(s): Milouse Dornevil, PharmD, BCNSP, BCPS / Leslie Wooten, PharmD, BCPS

2:20-3:20pm 1.0 hour of C.E. (GCE/CRC/Tech) **ACPE UAN 0163-0000-** ***What's New in Hypertension? An Update on the Latest Clinical Guidelines***

Rebecca Rainess, PharmD, Internal Medicine Clinical Pharmacy Specialist, AdventHealth Orlando, Orlando, FL

PHARMACIST AND TECHNICIAN OBJECTIVES:

- Compare prior ACC/AHA hypertension guidelines with the updated recommendations.
- Review the evidence supporting key ACC/AHA guideline recommendations.
- Apply the updated ACC/AHA hypertension guidelines into patient-specific case scenarios.
- Describe the role of pharmacists and pharmacy technicians in implementing the updated guidelines.

3:20-4:20pm 1.0 hour of C.E. (GCE/CRC/Tech) **ACPE UAN 0163-0000-** ***Clearing the Air: What's New (and What's Out) in COPD Guidelines***

Lanh Dang, PharmD, BCACP, Ambulatory Pharmacy Supervisor, Baptist Health, Jacksonville, FL

PHARMACIST AND TECHNICIAN OBJECTIVES:

- Compare and contrast key updates in the 2026 COPD guidelines.
- Review evidence-based pharmacologic recommendations.
- Apply the guidelines to case-based scenarios.
- Explain the role of pharmacists and pharmacy technicians in patient education (inhaler technique, smoking cessation, environmental triggers).



4:20-4:35am BREAK (Royal Ballroom)

General Medicine Track *continued* | 3.0 Hours of CE
Room: Peninsula 1-3

4:35-5:35pm 1.0 hour of C.E. (GCE/CRC/Tech) **ACPE UAN 0163-0000-**

STRIDE Forward – Personalizing Treat-To-Target in IBD Management: Update of the ACG 2025 Guidelines

Sheena Crosby, PharmD, BCGP, Inflammatory Bowel Disease Clinical Pharmacist, Mayo Clinic Florida, AbbVie Medical Science Liaison, Gastroenterology, Jacksonville, FL

PHARMACIST AND TECHNICIAN OBJECTIVES:

- Summarize key updates in the 2025 Crohn’s Disease and Ulcerative Colitis guidelines.
- Review evidence-based pharmacologic recommendations.
- Apply the guidelines to case-based scenarios.
- Explain the role of pharmacists and pharmacy technicians in improving patient access to advanced therapies for inflammatory bowel disease.

SATURDAY



Shine into the evening!

Aquatica’s AquaGlow

SATURDAY

8:00 – 11:00 PM

admission beginning at 4:00pm

Let's light up the night at Aquatica, an exclusive limited-capacity family-friendly event!

High-energy dance parties, dazzling laser light shows, unlimited complimentary soft drinks, low wait times and a complimentary commemorative bracelet. Upgrades available for additional fees.

Discounted tickets can be purchased on the FSHP website.

Tickets are \$52 per person and **only valid for August 8, 2026**. Limit 5 per order. Optionally, add parking for \$6 (normally \$30).

[Purchase Tickets](#)

fshp.org/store

IMPORTANT NOTES:

- **⚠️ Please review the [FAQs on the Aquatica website \(aquatica.com/orlando/faq/\)](#) prior to going!**
- Tickets are required for all guests ages three and older.
- Aquatica is a cashless park.
- Optional [add-ons and upgrades can be purchased from Aquatica \(aquatica.com/orlando/upgrades/\)](#)
- You are responsible for getting to/from the park (neither FSHP nor the Renaissance offer transportation).



7:00am-1:00pm REGISTRATION DESK OPEN (*Peninsula Registration Desk*)
7:00-7:30am ATTENDEE CONTINENTAL BREAKFAST (*Atrium CD*)

Innovation in Pharmacy Practice & Administration Track

3.0 Hours of CE | Room: Peninsula 4-7



7:20am PHARMACIST/RESIDENT/TECHNICIAN POSTER AWARD

Moderator(s)/Program Planner(s): Cher Enderby, PharmD, EMBA, BCPS, FASHP, FFSHP / Jessica Andrews, PharmD, BCCCP

7:30-8:30am 1.0 hour of C.E. (GCE/CRC/Tech) **ACPE UAN 0163-0000-
BEST PRACTICE SHOWCASE**

PART 1: Impact of a Compounding Compliance Committee Across an Integrated Health System

Hiren Shah, PharmD, Pharmacy Operations Manager, AdventHealth Central Fill Pharmacy, Orlando, FL / Jessica Wendler, PharmD, BCSCP, CPH, Pharmacy Coordinator, AdventHealth, Orlando, FL

PART 2: Development and implementation of a pharmacist-led post-intensive care syndrome clinic for neurocritical care patients

Jenny Stalas, PharmD, BCACP, Clinical Pharmacist - Ambulatory Care, AdventHealth Celebration, Celebration, FL / Mary Tremaine, PharmD, BCCCP, ENLS, Neurocritical Care, AdventHealth Celebration, Celebration, FL

PHARMACIST AND TECHNICIAN OBJECTIVES:

- Describe the best practices model as it fits within the complex healthcare organization.
- Examine legal or regulatory requirements that impact this model.
- Evaluate personnel and staffing requirements necessary for implementation of the best practice.
- Summarize the impact of the best practices model on quality, regulatory or other indicators.

Moderator(s)/Program Planner(s): Renee Rose, PharmD, BCPS

8:30-9:30am 1.0 hour of C.E. (GCE/CRC/Tech) **ACPE UAN 0163-0000-**

Pharmacy Administration and Innovation: High Reliability Organization/Just Culture and Empowering the Pharmacy Team

Heather Petrie, PharmD, MBA, BCPS, CPh, Pharmacy Clinical Coordinator, Parrish Medical Center, Titusville, FL / Natalie Manley, PharmD, Director of Pharmacy, AdventHealth Apopka, Apopka, FL

PHARMACIST AND TECHNICIAN OBJECTIVES:

- Zero-Harm Goal of eliminating preventable harm to patients, care partners, or the public.
- Establish a Culture of Safety with Just Culture where care partners feel empowered to report errors and near-misses without fear of punishment.
- Build High-Reliability Principles including five key principles into daily operations.
- Continuous Improvement using data and methodologies to quickly identify and mitigate risks.
- Enhanced situational awareness with real-time information sharing for quick risk identification.



**9:30am FSHP BOARD INSTALLATIONS &
FSHP PRESIDENT'S ADDRESS**

9:50-10:50am 1.0 hour of C.E. (GCE/CRC/Tech) **ACPE UAN 0163-0000-**
Artificial Intelligence in Pharmacy: From Buzzword to Bedside – Driving Innovation in Practice

Hesham Mourad, PharmD, EMBA, BCPS, BCCCP, FASHP, Senior Pharmacy Manager - Acute and Ambulatory Care Systems, Mayo Clinic, Jacksonville, FL

PHARMACIST AND TECHNICIAN OBJECTIVES:

- Describe core concepts of artificial intelligence (AI), machine learning, and generative AI as they relate to pharmacy practice.
- Identify current and emerging applications of AI across health-system, ambulatory, and specialty pharmacy settings.
- Evaluate opportunities and risks associated with AI-driven tools, including ethical, regulatory, and patient safety considerations.
- Apply innovation frameworks to assess and implement AI solutions within their own pharmacy practice environments.



10:50-11:00am BREAK (Atrium CD)

Medication Errors/Patient Safety | 2.0 Hours of CE
Room: Peninsula 4-7

Moderator(s)/Program Planner(s): Julieth Formosa, PharmD, BCPS / Norman Tomaka, BS Pharm, MS, FAPhA

11:00am-1:00pm 2.0 hours of C.E. (GCE/Tech) **ACPE UAN 0163-0000-**
Facets of Medication Safety: Reflecting on Lessons and Shaping a Safer Future

Robyn Yarsley, PharmD, BCPS, Assistant Professor of Pharmacy Practice - Assistant Professor of Health Sciences, Palm Beach Atlantic University, West Palm Beach, FL / Heather Stanley, PharmD, Medication Safety Manager, AdventHealth Central FL Division, Orlando, FL

PHARMACIST AND TECHNICIAN OBJECTIVES:

- Define medication errors and key terms associated with patient safety in healthcare.
- Identify key performance indicators used for error reduction and prevention.
- Demonstrate an understanding of how to apply root cause analysis to a medication event.
- Discuss patient safety stories and strategies used to prevent medication errors and improve patient safety.

See you next year!

2027
AUGUST 6-8

Gaylord Palms Resort



SUNDAY